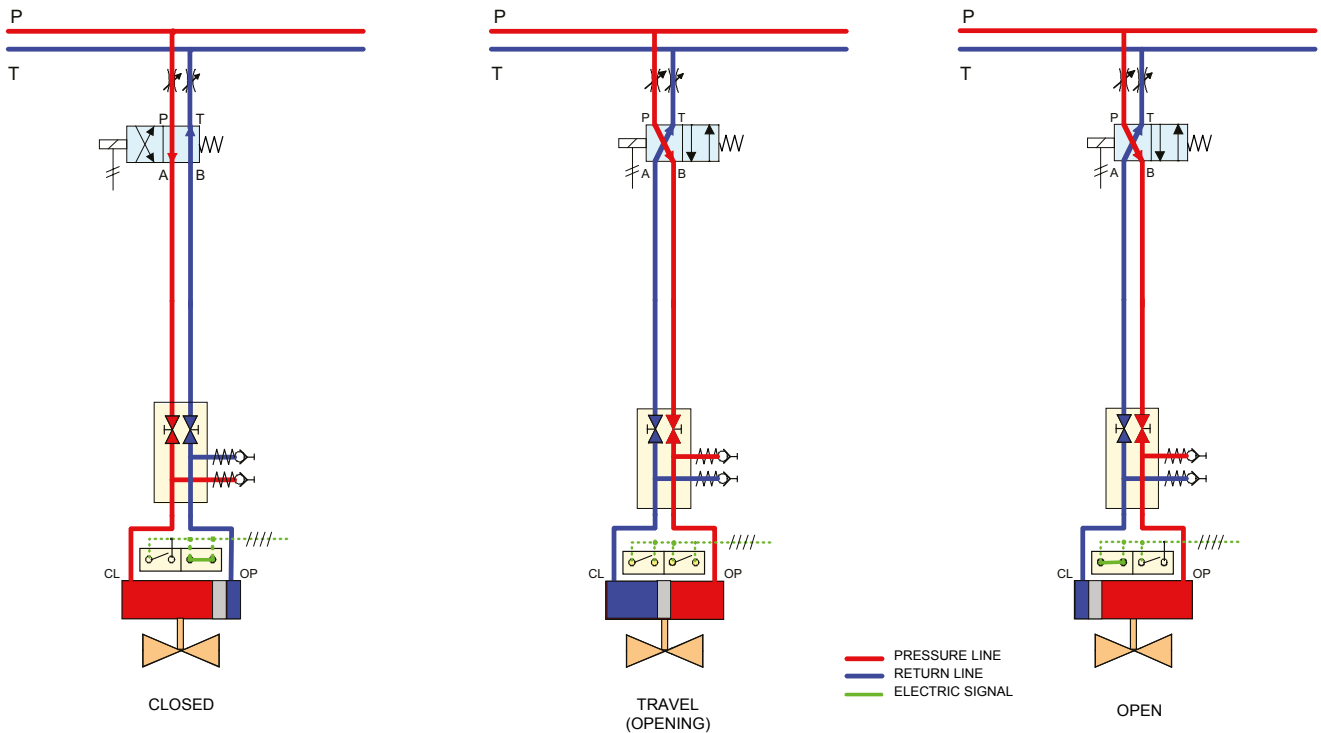


# Control Circuit D21 SRA

## Direct indication Open/Close (with spring return)



### Open/Close control, fail to close. Direct indication.

Control via spring loaded directional valve, 4/2 type, activated by one solenoid operated by electric signal.

Open/Close indication by two micro switches mounted in stainless steel housing, protection grade IP68, mounted directly on the actuator.