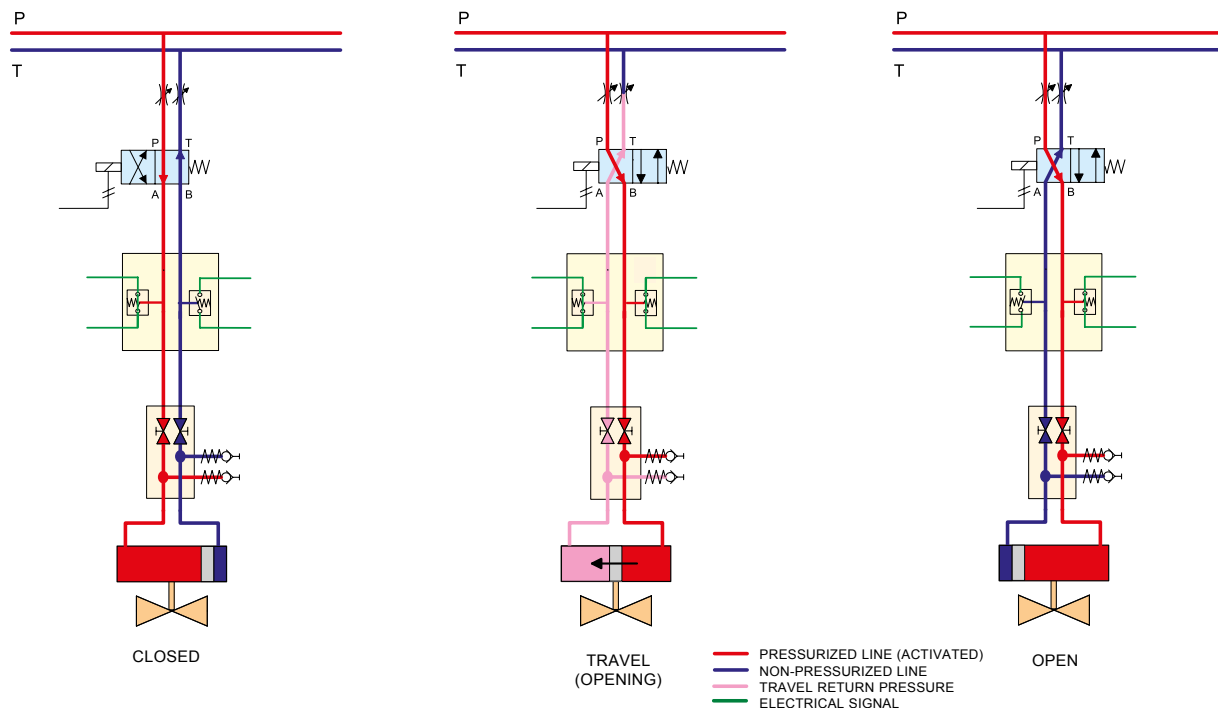


Control Circuit D22 SRA

Indirect indication Open/Close



Open/Close control, fail to close. Indirect indication.

Control via spring loaded directional valve, 4/2 type, activated by one solenoid operated by electric signal.

Open/Close position indication by flow/pressure switches in both "A" and "B" lines.

The pressure switches are activated at a pressure of less than 10 bar, and due to the throttle valve in the T-line, return flow in "A" or "B" line is indicated even at low pressure.

Activated pressure switch in "A" line only indicates actuator in "CLOSE" position, and activated pressure switch in "B" line indicates "OPEN" position. Both pressure switches activated indicates "ACTUATOR MOVING".

This indication circuit gives a positive feedback on actuator movement by indicating flow in the return line from the actuator.

Auto close/open function: Power supply to the control circuit may be supplied through an ESD system.

The D22-SR circuit will upon loss of electric signal automatically force the actuator to end position. In case of hydraulic power unit failure this circuit has hydraulic back-up by accumulator.